

Electron Energy Loss Spectra of Hydrogen Fluoride

Reference: Michael Allan, Université de Fribourg, 2000 (unpublished).

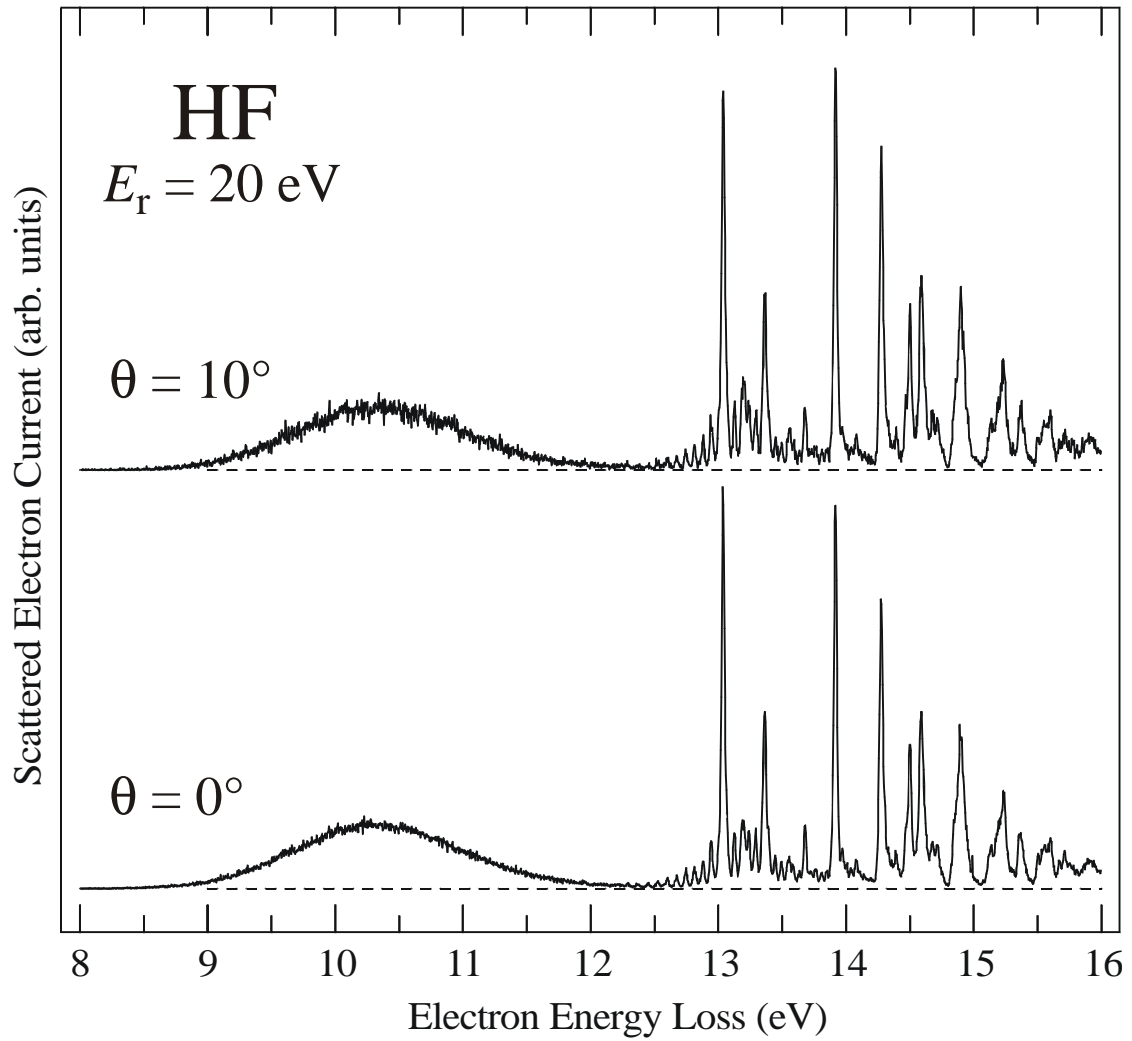


Fig. 1: Spectra emphasizing dipole-allowed transitions.

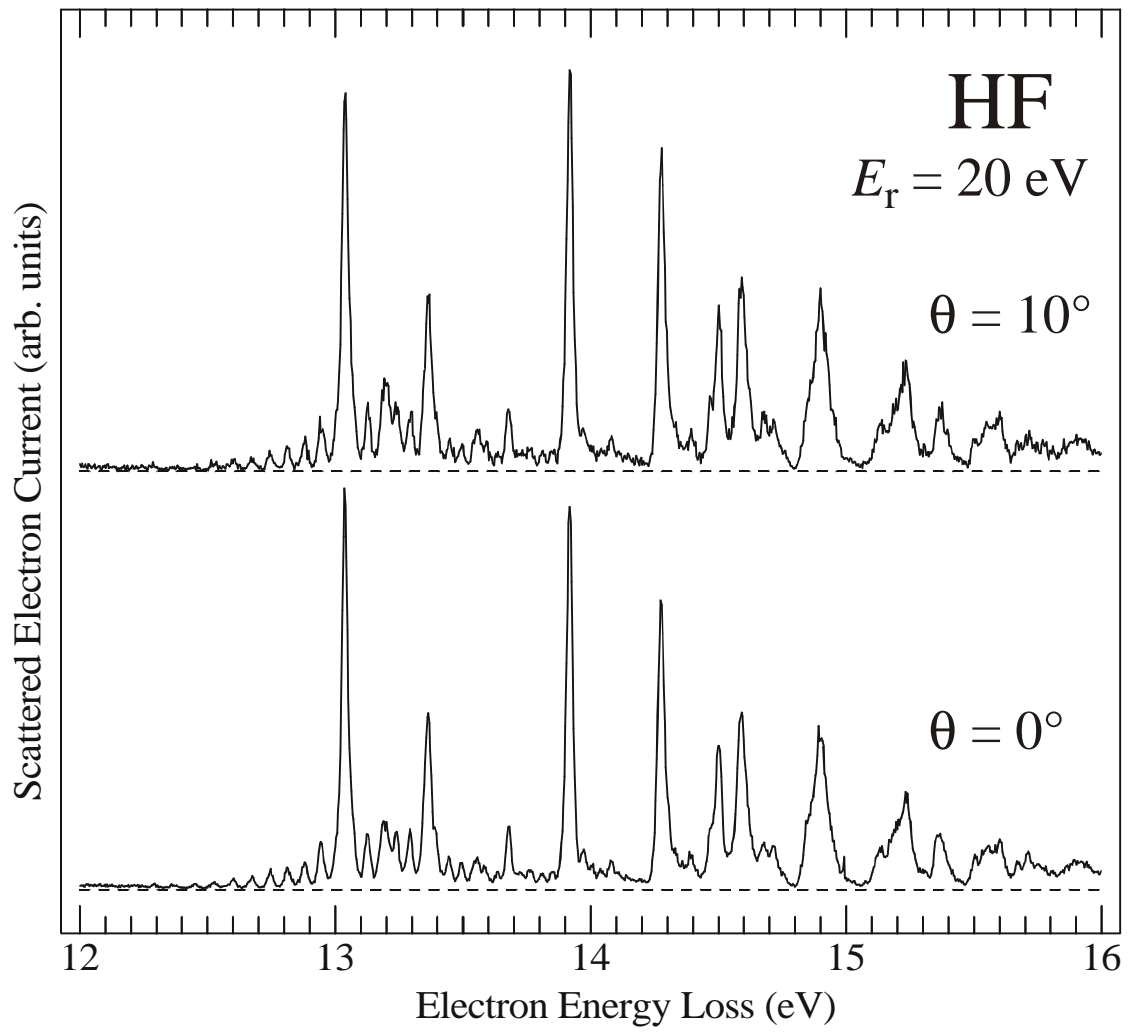


Fig. 2: Expanded view of the spectra of Fig. 1.

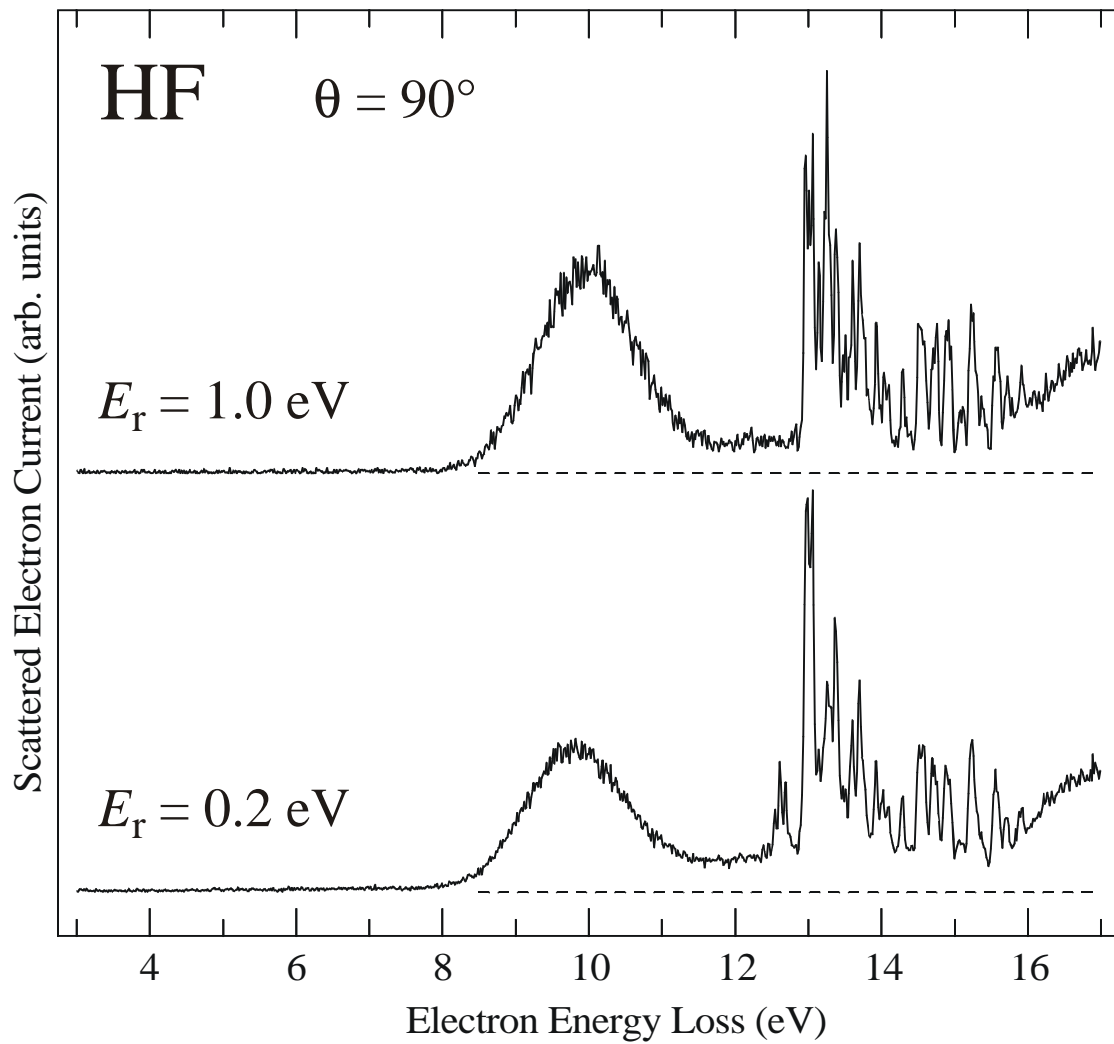


Fig. 3: Spectra emphasizing spin-forbidden transitions. (The peaks around 12.7 eV in the lower spectrum are presumably due to decay of Feshbach Resonances.)

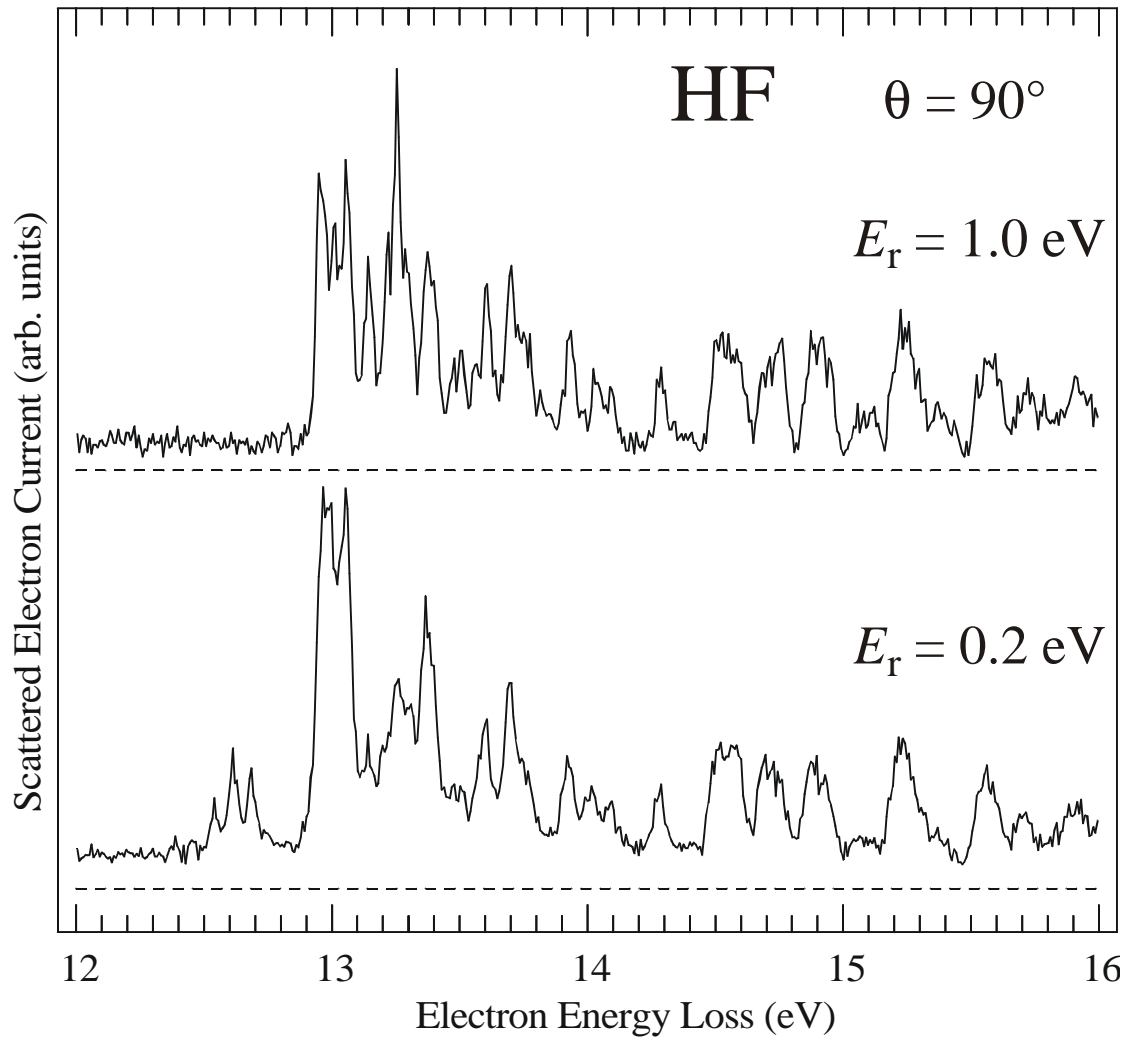


Fig. 4: Expanded view of the spectra of Fig. 3.